

UR219 Series Ultipleat® SRT Filters

Features

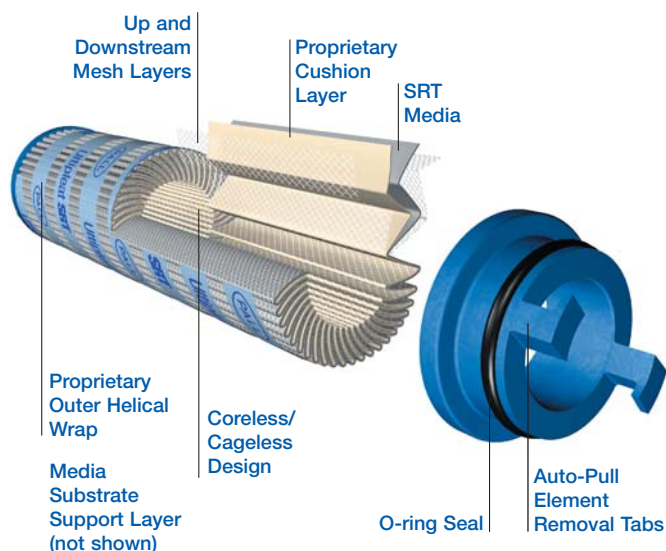
- Patented Ultipleat (laid-over pleat) filter medium pack
- Coreless, cageless element configuration
- Pall Stress-Resistant Technology (SRT) Media
- In-to-out filter element flow path
- Flows to 265 L/min (70 US gpm)
- Pressures to 41 bar (600 psi)
- Port size ¾", 1", and 1¼"

Notes and Specifications

Maximum Working Pressure:	41 bar (600 psi)
Rated Fatigue Pressure:	41 bar (600 psi)
<small>(10⁶ cycles per NFPA T2.06.01R2-2001)</small>	
Burst Pressure:	145 bar (2100 psi)
Temperature Range:	Fluorocarbon Seals: -29°C to 120°C (-20°F to 250°F) 60°C (140°F) maximum in HWCF or water glycol fluids
Filter Element Burst Pressure:	10 bard (150 psid)
Materials of Construction:	Aluminium alloy head, tube and cap

Ultipleat SRT

Element Construction:	Inorganic fibers impregnated and bonded with epoxy resins. Polymer endcaps. Anti-static media design.
-----------------------	-------------------------------------------------------------------------------------------------------

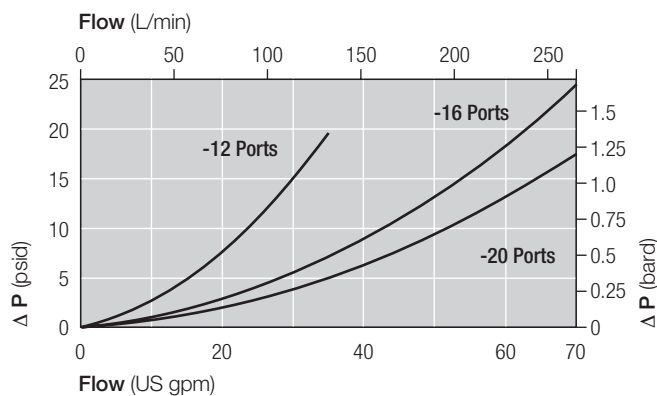


UR219 series Ultipleat SRT filter housing.

Pressure Drop Information

Housing pressure drop using fluid with 0.9 S.G.

Housing pressure drop is directly proportional to specific gravity.



Element Pressure Drop

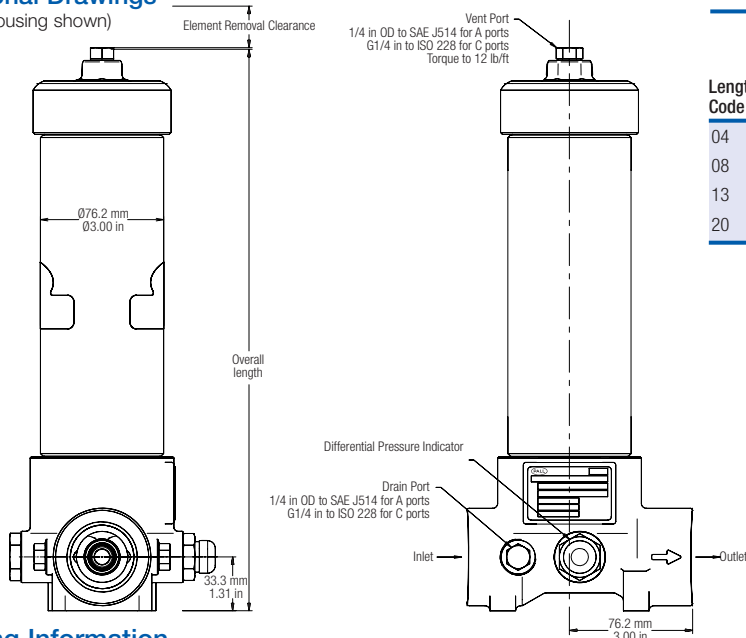
Multiply actual flow rate times factor in table below to determine pressure drop with fluid at 32 cSt (150 SUS), 0.9 S.G. Correct for other fluids by multiplying new viscosity in cSt/32 (SUS/150) x new S.G./0.9. Note: factors are per 1000 L/min and per 1 US gpm.

UE219 Series Filter Elements - bard/1000 L/min (psid/US gpm)

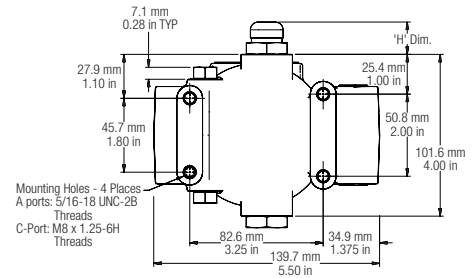
Length Code	AZ	AP	AN	AS	AT
04	20.07 (1.102)	8.51 (0.467)	5.72 (0.314)	3.55 (0.195)	2.69 (0.148)
08	9.93 (0.545)	4.21 (0.231)	2.83 (0.155)	1.76 (0.096)	1.33 (0.073)
13	5.95 (0.327)	2.52 (0.139)	1.70 (0.093)	1.05 (0.058)	0.80 (0.044)
20	3.95 (0.217)	1.68 (0.092)	1.13 (0.062)	0.70 (0.038)	0.53 (0.029)

Dimensional Drawings

('C' option housing shown)



Length Code	'C' Option Overall Length mm (in)	'H' Option Overall Length mm (in)	'C' Option Element Removal Clearance mm (in)	'H' Option Element Removal Clearance mm (in)	Empty Weights kg (lb)
04	246 (9.72)	260 (10.3)	130 (5)	64 (2.5)	2.5 (5.6)
08	348 (13.72)	362 (14.3)	230 (9)	64 (2.5)	3.1 (6.8)
13	483 (19.02)	496 (19.6)	370 (14.5)	64 (2.5)	3.6 (7.9)
20	653 (25.72)	667 (26.3)	530 (21)	64 (2.5)	3.9 (8.5)



Ordering Information

Housing P/N: UR 219 Table 1 Table 2 ++ Table 4 Z Table 5 9

Element P/N: UE 219 Table 3 Z Table 4

Notes: Z indicates fluorocarbon seals are standard. Other options are available; contact Pall. The number '9' at the end of the Housing P/N designates 2 indicator ports, one fitted with a plastic shipping plug and the other with a blanking plug (P/N HA9000-P8-Kit Z).

Table 1: Housing Orientation Options

Code	Option
C	Cap service (tube up) -standard
H	Head service (tube down)

Table 2: Housing Port Options

Code	Port
A12	3/4"SAE J514 straight thread
A16	1"SAE J514 straight thread
A20	1 1/4"SAE J514 straight thread
C12	3/4"BSP ISO 228 threads
C16	1"BSP ISO 228 threads
C20	1 1/4"BSP ISO 228 threads

Table 3: Filter Element Options

Code	$\beta_{x(c)} \geq 1000$ based on ISO 16889	CST Rating*
AZ	3	08/04/01
AP	5	12/07/02
AN	7	15/11/04
AS	12	16/13/04
AT	22	17/15/08

* CST: Cyclic Stabilization Test to determine filter rating under stress conditions, based on SAE ARP4205

Table 4: Housing & Element Length Options

Code	Length (in)*
04	4
08	8
13	13
20	20

* Nominal length

Table 5: Housing Bypass Valve Options

Code	Valve
A	1.7 bard - 25 psid Use 084 code indicator only
G	4.5 bard - 65 psid Use 091 code indicator only
N	Non-Bypass Use 091 code indicator only

Indicator P/N: RC Table 6 Table 7 Z Table 8 Table 9

Note: If no differential pressure indicator is selected, 'B' Type blanking plug (P/N HA9000-P8-Kit Z) must be ordered separately and fitted to replace the plastic shipping plug

Seal Kit P/N: UR 219 SKZ

*Other seal material options are available; Contact Pall.

Table 6: Differential Pressure Indicator Options*

Code	Indicator	'H' Dim.
778NZ	'P' type Visual indicator with thermal lockout	21mm (0.83in)
860MZ	'D' type Visual indicator with no thermal lockout	21mm (0.83in)
861CZ	'L' type Electrical switch (SPDT) with 6" lead	38mm (1.50in)
861CZ	'M' type Electrical switch (SPDT) with DIN43650 connector and matching cap	78mm (3.07in)
861CZ	'R' type Electrical switch (SPDT) and neon light indicator with DIN43650 connector and cap	89mm (3.50in)
771BZ	'S' type Electrical switch (SPDT) with 3-pin MS connector	57mm (2.24in)

* Other indicator options are available; contact Pall.

Table 7: Indicator Pressure Setting Options*

Code	Valve
084	For 'A' Valve Option Housings (1.1 bard - 16 psid)
091	For 'G' and 'N' Valve Options Housings (3.5 bard - 50 psid)

* Other setting options are available; contact Pall.

Table 8: 'M' & 'R'-Type Indicator Codes*

Code	Option
YM	'M' option
YR	'R' option

* Use only if 'R' or 'M' Indicator is selected from Table 6

Table 9: 'R-Type' Indicator Options*

Code	Option
110AC	110V AC
220AC	220V AC
24DC	24V DC

* Use only if 'R-Type' Indicator option is selected from Table 6



Pall Corporation

Pall Industrial Manufacturing

New York - USA
+1 888 333 7255 toll free
+1 516 484 3600 telephone
+1 516 484 6247 fax

Portsmouth - UK
+44 (0)23 9230 3303 telephone
+44 (0)23 9230 2507 fax

Visit us on the web at www.pall.com

Pall Corporation has offices and plants throughout the world in locations including: Argentina, Australia, Austria, Belgium, Brazil, Canada, China, France, Germany, Hong Kong, India, Indonesia, Ireland, Italy, Japan, Korea, Malaysia, Mexico, the Netherlands, New Zealand, Norway, Poland, Puerto Rico, Russia, Singapore, South Africa, Spain, Sweden, Switzerland, Taiwan, Thailand, United Arab Emirates, United Kingdom, United States, and Venezuela. Distributors are located in all major industrial areas of the world.

Because of developments in technology these data or procedures may be subject to change. Consequently we advise users to review their continuing validity annually. Part numbers quoted above are protected by the Copyright of Pall Europe Limited.

PALL, Pall and Ultiplett are trademarks of Pall Corporation.
Filtration. Separation. Solution is a service mark of Pall Corporation.
® indicates a trademark registered in the USA.
© Copyright 2007, Pall Corporation.

Filtration. Separation. Solution.sm